



# CCD Industrial Color Sorter

-Hefei Taihe Intelligent Technology Group Co., Ltd.

-2022-

# CONTENT

**01****Company Profile****02****Machine Application****03****Technical Strength****04****Customized Service**



# 01 Company Profile

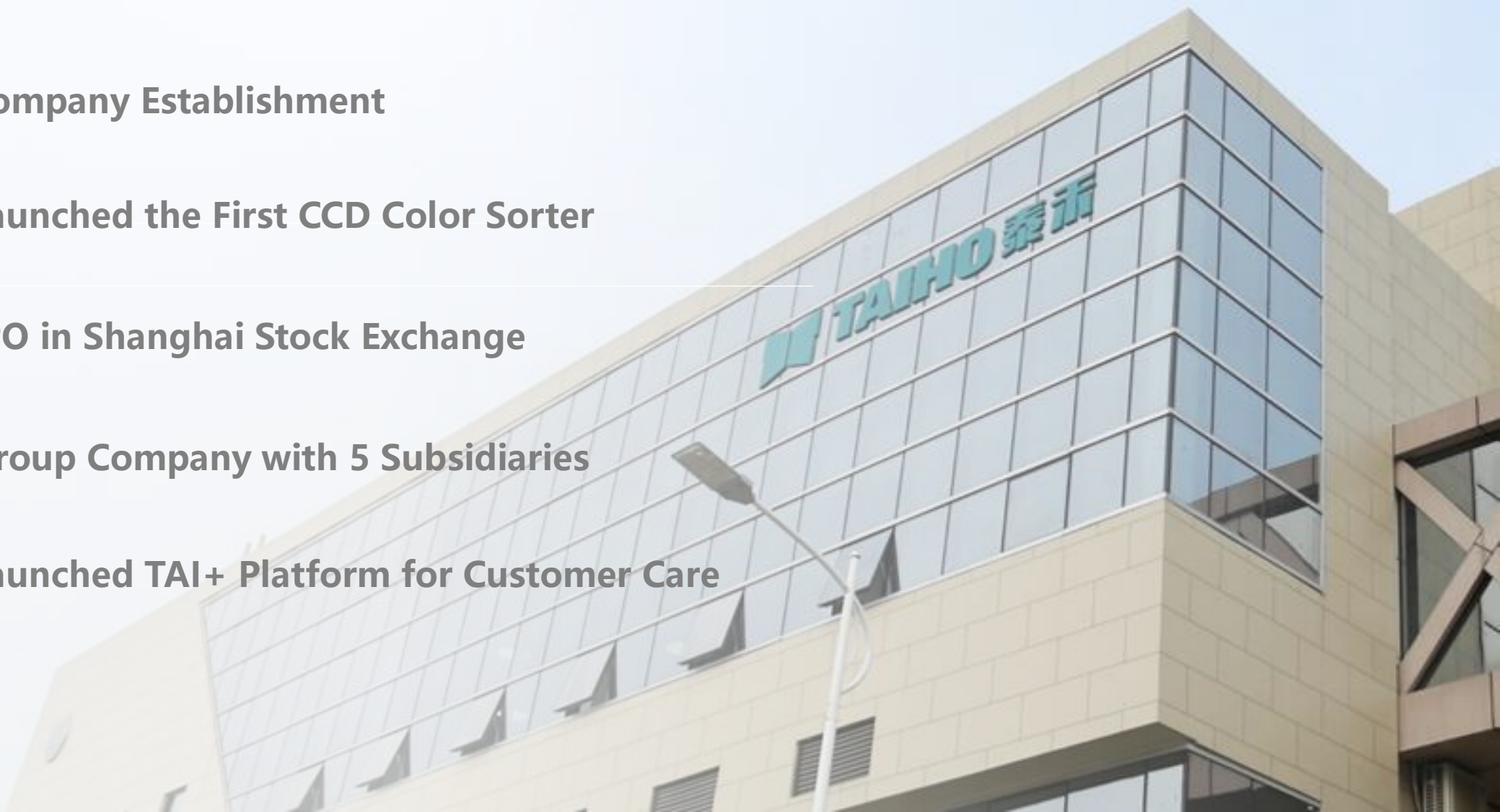
**2004** Company Establishment

**2008** Launched the First CCD Color Sorter

**2017** IPO in Shanghai Stock Exchange

**2020** Group Company with 5 Subsidiaries

**2022** Launched TAI+ Platform for Customer Care



### ➤ Waste Plastic Recycling



Agent Sorting

**PET**





### ➤ Waste Plastic Recycling





### ➤ Waste Plastic Recycling



ent Sortin

PS





### ➤ Waste Plastic Recycling



PE(Bottle Cap)





### ➤ Waste Plastic Recycling

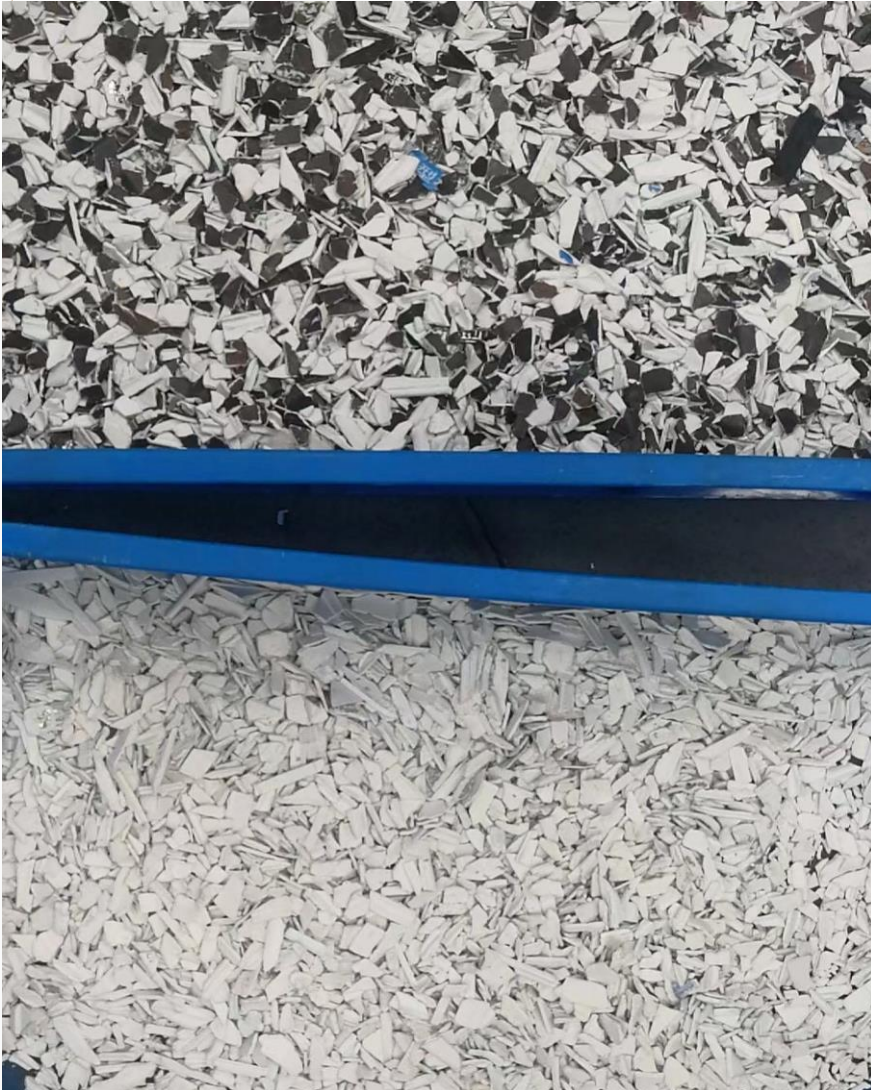


Milk Bottle Scrap





### ➤ Waste Plastic Recycling



UPVC





### ➤ Waste Plastic Recycling



ABS





### ➤ Waste Plastic Recycling



nt Sorting M

To get transparent





### ➤ Waste Plastic Recycling



nt Sorting

Plastic particle





### ➤ Nonferrous Metal Recycling



gent Sorting



**Cooper and Aluminum Scrap**





### ➤ Nonferrous Metal Recycling



**Copper and Aluminum Scrap**





### ➤ Nonferrous Metal Recycling



Intelligent Sorting Machine

Cooper and Aluminum Chips





### ➤ Nonferrous Metal Recycling



gent Sorting Machi

**Cooper and Aluminum Pieces**





### ➤ Nonferrous Metal Recycling



ment Sorting Ma

**Electric Board Scrap**





### ➤ Nonferrous Metal Recycling



Other





### ➤ Waste Glass Recycling



Sorting Machine







# Technical Specification of Plastic Color Sorter:

产品系列 Product series	型号 Model	处理量 throughput (T/h)	整机功率 Power (kW)	电源电压 Supply voltage (V)	气源压力 Air pressure (MPa)	气源消耗 Air consumption (m³/min)	规格尺寸 Size (mm)	机器重量 Weight (kg)
智睿+系列 ZERVI+ SERIES	6SXG-126S+	0.2-0.6	1.3	220V/50Hz	0.5-0.8	0.5-1.0	1284*1520*2090	723
	6SXG-189S+	0.3-0.9	1.9	220V/50Hz	0.5-0.8	0.8-1.5	1598*1520*2090	891
	6SXG-252S+	0.4-1.2	2.4	220V/50Hz	0.5-0.8	1.0-2.0	1872*1520*2090	1030
	6SXG-315S+	0.5-1.5	3.0	220V/50Hz	0.5-0.8	1.3-2.1	2186*1520*2090	1160
	6SXG-378S+	0.7-1.8	3.6	220V/50Hz	0.5-0.8	2.0-3.5	2540*1520*2090	1355
	6SXG-441S+	1.0-2.0	4.1	220V/50Hz	0.5-0.8	2.5-4.3	2854*1520*2090	1575
	6SXG-504S+	1.2-2.5	4.7	220V/50Hz	0.5-0.8	3.0-4.8	3168*1520*2090	1740
	6SXG-630S+	1.5-3.0	5.8	220V/50Hz	0.5-0.8	5.0-6.5	3796*1520*2090	2130



# Technical Specification of Belt Color Sorter(metal):

## 6SXL-1200(single layer)

### 规格参数 / Technical Specification

产品型号 Product model	6SXL-1200	外形尺寸 (L*M*H) Dimension	3616*2388*1854
通道数 Channel number	252	机器重量 Weight	1500KG
整机功率 power	1.8KW	产量 (金属类) Output (scrap metal)	1.0-4.0T/H
电源电压 Supply voltage		产量 (再生资源类) Output (renewable resources)	0.5-3.0T/H
气源压力 Air pressure	0.4-0.6MPa	选净率 Sorting accuracy	>99
气源消耗 Air consumption	1.2-2.1m <sup>3</sup> /min	最优带出比 (坏:好) Optimal carryover ratio(bad:good)	>8:1

## 6SXL-1200II(double layer)

### 规格参数 / Technical Specification

产品型号 Product model	6SXL-1200II	外形尺寸 (L*M*H) Dimension	3845*2666*2950
通道数 Channel number	252	机器重量 Weight	1500KG
整机功率 power	5KW	产量 (金属类) Output (scrap metal)	1.0-4.0T/H
电源电压 Supply voltage	主机220V/振动380V/50HZ Color Sorter:220V/50Hz Feeding Vibrator:380V/50Hz	产量 (再生资源类) Output (renewable resources)	0.5-3.0T/H
气源压力 Air pressure	0.4-0.6MPa	选净率 sorting accuracy	>99
气源消耗 Air consumption	2.5-4.3m <sup>3</sup> /min	最优带出比 (坏:好) Optimal carryover ratio(bad:good)	>8:1



# Technical Specification of Glass Color Sorter:

Dimensions(L*W*H)	3300*2300*1700 mm
Weight	1680 kg
Working Condition	-10℃~40℃
Protection Level	IP55
Input Voltage	AC220V±10% , Three-phase AC380V±10% (50-60Hz)
Power of Machine	2.2 kw
Air Consumption	2.5~4.4 m³/min
Air Pressure	0.3~0.6 MPa
Capacity	8~12 t/h
Sorting Accuracy	>99 %
Carry Over Ratio(bad:good)	>8:1
Min Resolution	0.6 mm

## Sorting Examples Show



OTHER COLOR



TRANSPARENT

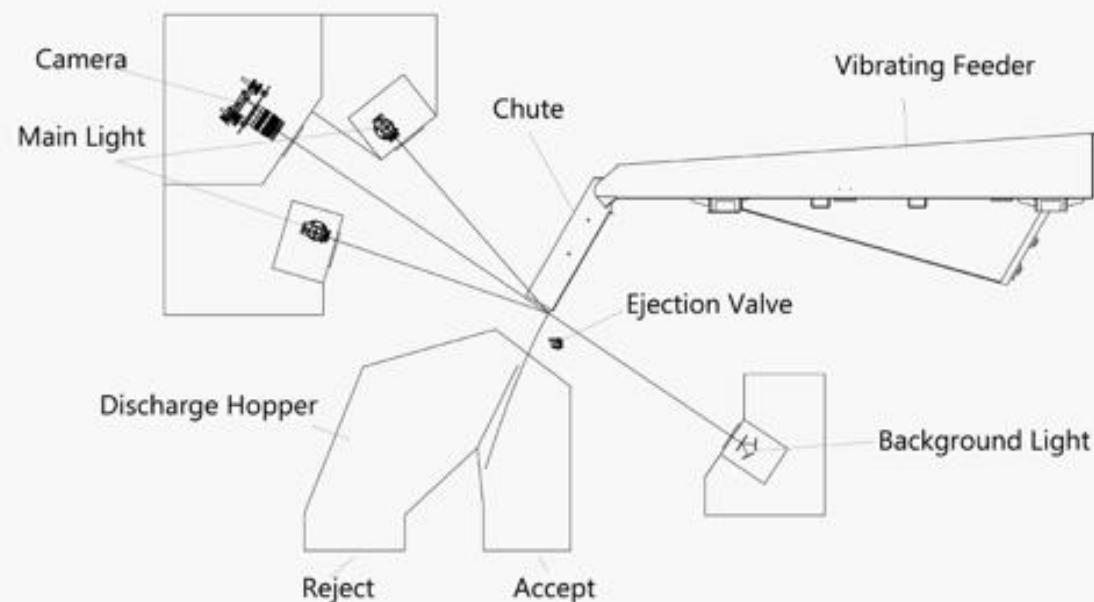


CSP



CULLETS

## Schematic Diagram





## 03 Technical Strength

### 2.6 billion pixel CCD Camera





### LED transmission illumination system

- LED light
- Average illumination
- Accurate brightness control
- Energy saving
- Long lifetime ,5w-10w hours
- Free maintenance

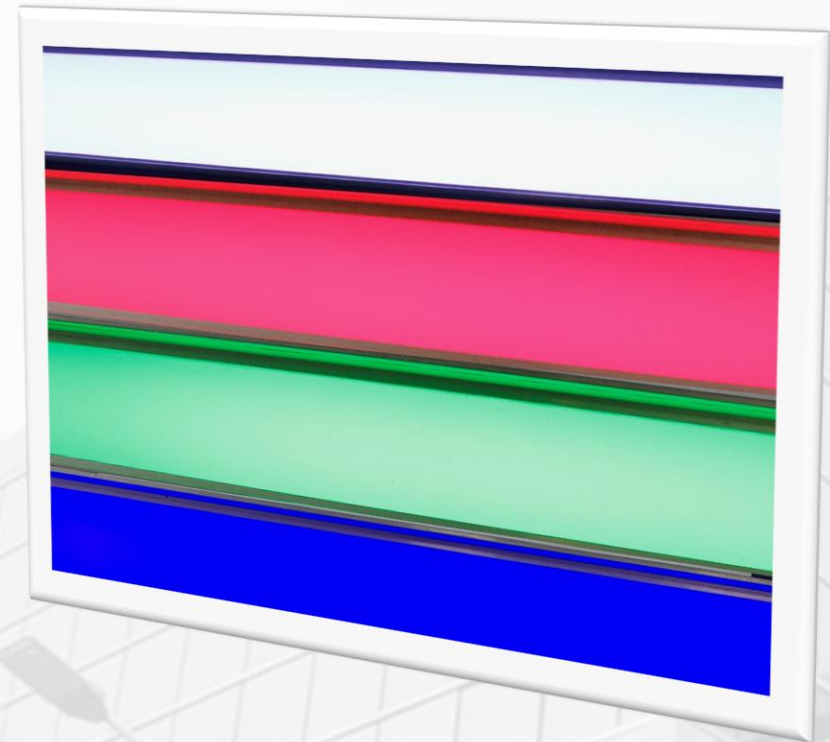






### RGB background light

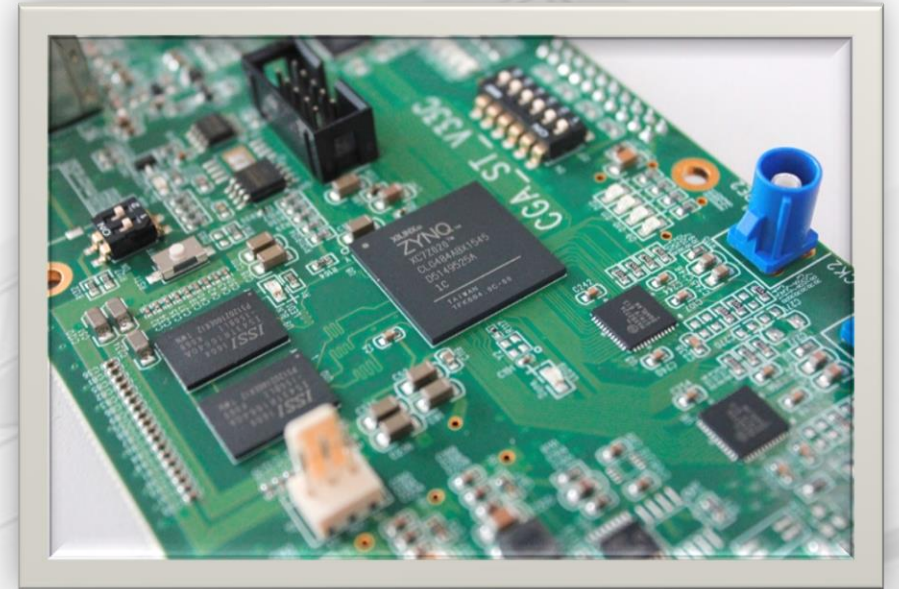
- Flexible color mixing technology
- More than 16 million colors
- Easy to sort multiple materials





### SOC

- System-level chip
- High performance and low power consumption
- No.1 band width and integration in the industry
- Processing capacity is 5 times more compare with DSP





### Precision solenoid valve

Fast response time can reach 0.1 ms, frequency can reach 500HZ

Accurate rejection

Low air consumption ,0.5m<sup>3</sup>/min per single chute

Low power consumption





### Human-machine interface

- Operating with HD sensitive touch screen
- New UI interface
- Easy to operate







**Step 1: Please tell us what you want to sort in details.**

**Step 2: We will take all into consideration for the optimal solution.**





# THANKS

**Add:** Intersection of Fangxing Road and Yulan Road, Taohua  
Industrial Zone, Hefei, Anhui Province, China  
**Tel:** +86 551 65399015  
**[www.chinataiho.com](http://www.chinataiho.com)**